



Edmonds

Lynnwood

# Overlay Program

2006 - 2016 #A1

## Legend

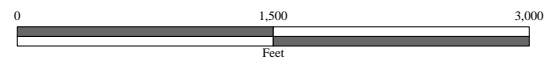
- City Boundary
- Parcel Line
- Pavement

Year	Cost	Length
Year 2006	(\$881,400)	.84 miles
Year 2007	(\$483,200)	.41 miles
Year 2008	(\$474,200)	.31 miles
Year 2009	(\$999,800)	.75 miles
Year 2010	(\$115,800)	.42 miles

## 2011 - 2016 TIP

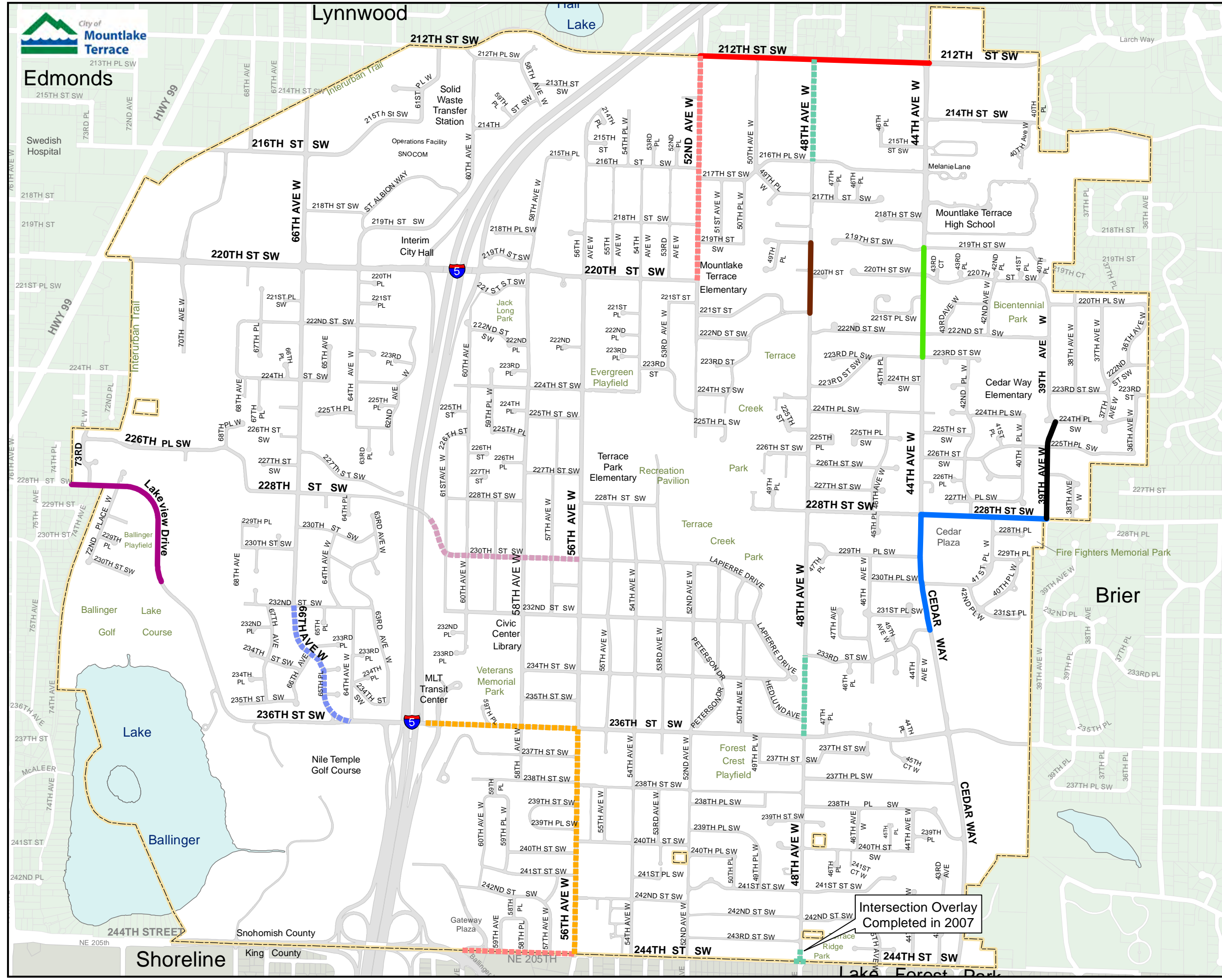
- Year 2011 (\$1,231,765)
- Year 2012 (\$1,126,800)
- Year 2013 (Not Funded)
- Year 2014 (Not Funded)
- Year 2015 (Not Funded)
- Year 2016 (Not Funded)

**Total 2006-2016 (\$5,312,965)**  
**Unfunded Estimate (\$2.4 million)**



UPDATED NOVEMBER 2011

This map was produced by the City of Mountlake Terrace geographic information system. It does not represent survey accurate information. No warranties of any sort, including accuracy, fitness, or merchantability accompany this product.



Intersection Overlay Completed in 2007