

ALLOWED TEMPORARY SIGNS

(Pursuant to MTMC 19.135.060.I)

Permits and Fees Apply ¹



1. New Business or Change in Ownership ² (grand opening advertisement)

a. Temporary sign

- Type: A-board (sandwich board) or single-faced, non-illuminated, weighted ³
- Number: One (1)
- Size: 15 square feet (total display area on all sign faces)
- Where: See No. 4, where allowed (on back page)
- How often: One-time only, within six (6) months after receiving first City business license
- How long: Up to 90 days from date permit is issued or 180 days from date business license is issued, whichever is sooner

b. Grand opening signs ^{1, 4}

- Type: Flags, pennants, banners, search lights, balloons, streamers, and other similar advertising to notify the

public of its opening. No light emitting device shall be used between 10 p.m. and 8 a.m.

- Number: Not applicable
- Size: Not applicable
- Where: On site of business being advertised
- Times per year: One-time only, within one (1) year from the date the business license is issued
- How long: Three (3) weeks, maximum



2. Existing Businesses (applies to any business or community group)

Special Event Signage ⁵

- Type: Signs, banners, streamers, posters, festoons, clusters of lights, flags, pennants, balloons, non-flashing portable reader board signs and search lights
- Number: Not applicable
- Size: Not applicable, except for portable reader boards, 30 square feet, maximum
- Where: On-site
- How often: Three (3) per year
- Time interval between events: 45 days

or more apart

- How long: 10 days each, maximum

3. Banners over streets

(Pursuant to MTMC 19.136.040)

Applies only to non-profit organizations and governmental agencies to announce a community event. Contact City Hall for more information. A separate banner permit application and fee applies (Resolution No. 613).



¹ The permit application can be obtained at City Hall or online at: www.cityofmlt.com/cityServices/development/permitApplicationForms.htm. Fees vary

² Allowed in BC, CG & LI/OP districts and for new development in RM districts. No temporary signs are allowed in RS districts

³ Weighting method to be approved by Community and Economic Development Department

⁴ Multi-household residential development in RM zones are also permitted to use grand opening signs as noted

⁵ Allowed in any district



Special note

Signs displaying a public service message installed by a governmental agency are allowed, consistent with traffic safety requirements.



TEMPORARY SIGNS

4. Where may temporary signs be placed? (Pursuant to MTMC 9.135.060.I.1.a.ii and iii)

a. Allowed locations

- On private property of the business or organization
- Landscape planter areas
- Interior walkways provided that:
 - The sign is placed adjacent to business advertized, and
 - At least four (4) feet of continuous walkway is clear between sign and edge of sidewalk

b. Not allowed locations

- Within a public right-of-way (including public sidewalk and land in public right-of-way)
- Mounted to, or placed on, a building
- On a vehicle
- In a parking stall
- In a driveway
- In a vehicle turnaround area
- Anywhere it will create a sight obstruction

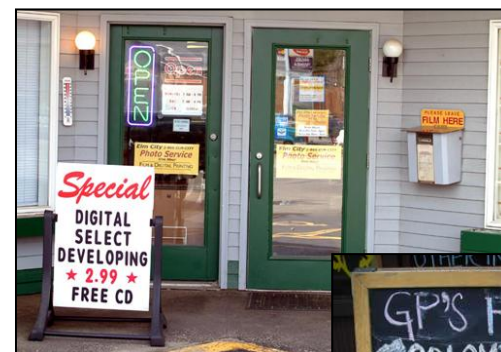
For more information contact

Phone 425.744.6267

Fax 425.778.6421

PermitSpecialist@ci.mlt.wa.us

www.cityofmlt.com



City of Mountlake Terrace
Community and Economic Development
PO Box 72
Mountlake Terrace, WA 98043

